

graficheantiga

ga_guide_02_v1



**PRACTICAL GUIDE TO MANAGE
THE COLOR CORRECTLY
IN THE ADOBE SOFTWARES**

INDEX

1. Guide for the management of the color in the Adobe softwares	4
2. Opening of a document or file not in compliance with the Grafiche Antiga standards	6

01_GUIDE FOR THE MANAGEMENT OF THE COLOR IN THE ADOBE SOFTWARES

The reference standards for Grafiche Antiga are:

RGB: ADOBE RGB (1998)
CMYK: ISOCOATED_V2_ECI

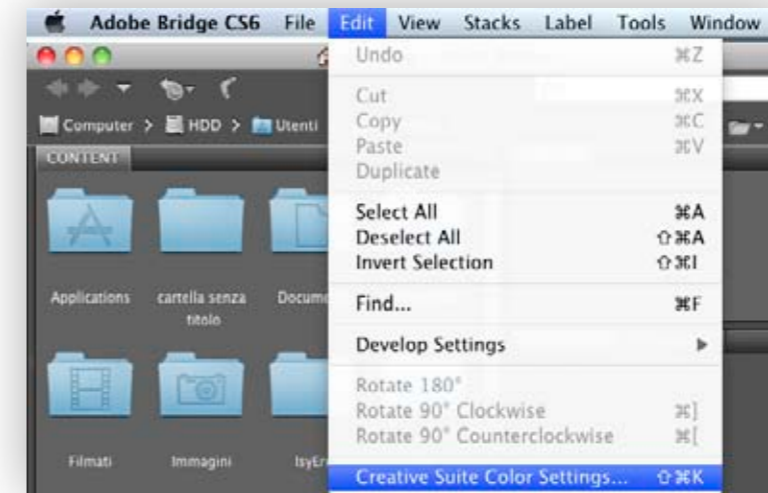
All Adobe software must be synchronized and use the same color layouts for a management in compliance with Grafiche Antiga standards.

In order to synchronize all software:

1. Download the file [GraficheAntiga_gestione_colore_v1.csf](#) from the site www.graficheantiga.it (section services – prepress – standards – predefined)
2. Copy the file into the record “Settings” as follows (see attached picture):



3. Open the program Adobe Bridge CS6 and open the color layouts



4. Select the layout GraficheAntiga_gestione_colore_v1.csf and click on apply



At this point all the applications of the Creative Suite are synchronized with the same color layouts for a management in compliance with Grafiche Antiga standards. From now on all the files which don't respect the above mentioned standards will be intercepted and managed correctly.

02_OPENING OF A DOCUMENT OR FILE NOT IN COMPLIANCE WITH GRAFICHE ANTIGA STANDARDS

Layouts for the correct management of the InDesign documents

When a InDesign document doesn't respect the Grafiche Antiga standards two different warnings appear regarding the management of the color RGB and CMYK.

These must be managed as follows:



1. RGB rules and controls the document according to the current layouts



2. CMYK rules and controls the document according to the current layouts

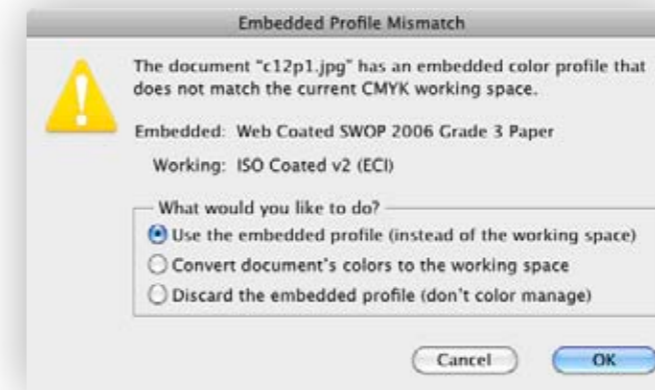
Layouts for the correct management of the Photoshop documents

When a Photoshop document doesn't respect Grafiche Antiga standards two different warnings appear regarding the management of the color RGB and CMYK.

They must be managed as follows:



1. RGB: uses the embedded profile



2. CMYK: uses the embedded profile

