

graficheantiga

ga_guide_04_v1



**PRACTICAL GUIDE FOR PDF EXPORT
EITHER FROM INDESIGN
AND FROM QUARK_V8**

01_EXPORT OF A PDF FILE FROM ADOBE INDESIGN CS6 SOFTWARE AND QUARKXPRESS 8

The PDF (Adobe Portable Document Format) is a closed file that can't be modified but for some limited corrections. That's why it's a very secure file, less heavy to print.

In order to create a correct PDF is necessary to start from a paged proof with specific characteristics:

1. Resolution:

Suggested resolution 300 dpi.

2. Images:

In the document the links must be all updated and connected (not missing). With printings in four-color reproduction images must be in CMYK with built-in profile (reference standard ISOcoated_v2_eci-icc). Images in RGB must have the original in-built profile. If the profile is not incorporated we will assign the reference standard ISOcoated_v2_eci.icc for CMYK and Adobe_RGB_(1998).icc for RGB.

The images to print in black or Pantone must be in grey or bitmap. The accepted formats are Tiff, Psd, Eps, Jpeg high quality.

3. Colors:

Use Pantoni only in documents that must be printed in spot colors.

In this case verify in the proper range of colors that these colors are not converted into four-color reproduction; if the job is provided in PDF verify the correct export of the flat colors.

If the print isn't with Pantone or spot colors the document must be managed in CMYK(verify in the range of the used color proofs that no spot colors are present).

Avoid the colors with definition in RGB as they are studied for video and can lead to unexpected results if converted into four-color reproduction.

In the backgrounds or in elements in black with big dimensions use the so called "dark black". The correct values are: C=40, M=30, Y=30, K=100. Don't use "dark black" or other complex colors on technical drawings, particularly thin texts or thinner than 6 pt; in fact during the printing process these elements could have problems of matching.

4. Fonts:

The fonts used in the document must be active.

5. Excess:

For pages containing backgrounds or live images an excess of at least 3 mm is requested.

In case of boarded covers or ring binders at least 2 cm.

6. Ennoblings:

In case of serigraphy colors, varnish, die-cut, debossing and embossing use a spot color in the over-printing phase in order to avoid the drilling and make the overlapped color transparent in comparison with the one underneath.

It's preferable to manage the ennobling separately inside the document.

7. Documents:

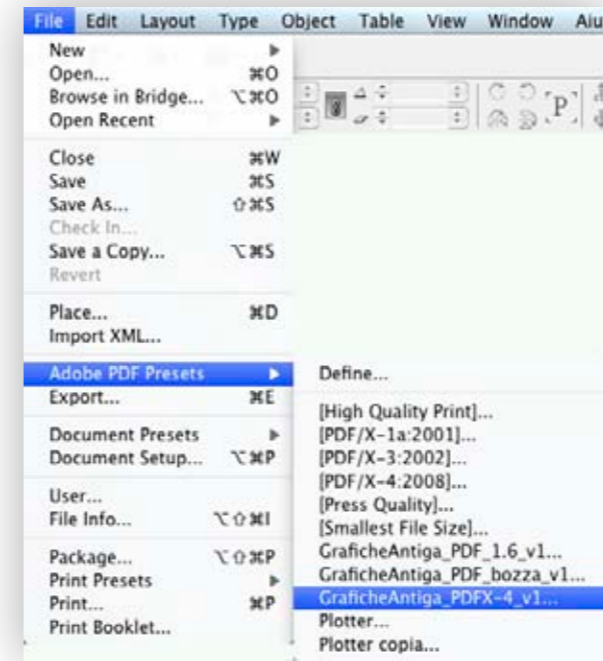
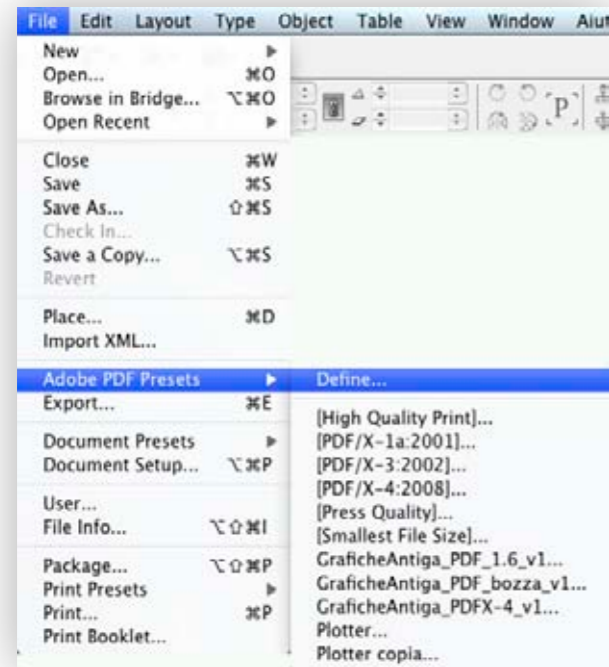
In case of perfect bound, the cover must not be put inside the document of the book body, but inside another document including thickness and eventual flaps.

Before sending the PDF we suggest to control it as soon as it is created.

For your guidance it's good to send the file with a paper draft.

01.1_HOW TO CREATE A PDF/X-4.2010 FROM INDESIGN CS6

We suggest to use our GraficheAntiga_PDFX-4_v1.joboptions. Download it from our site www.graficheantiga.it in the section Services/servizi – Prepress/prestampa – standards – Presets/Predefiniti.



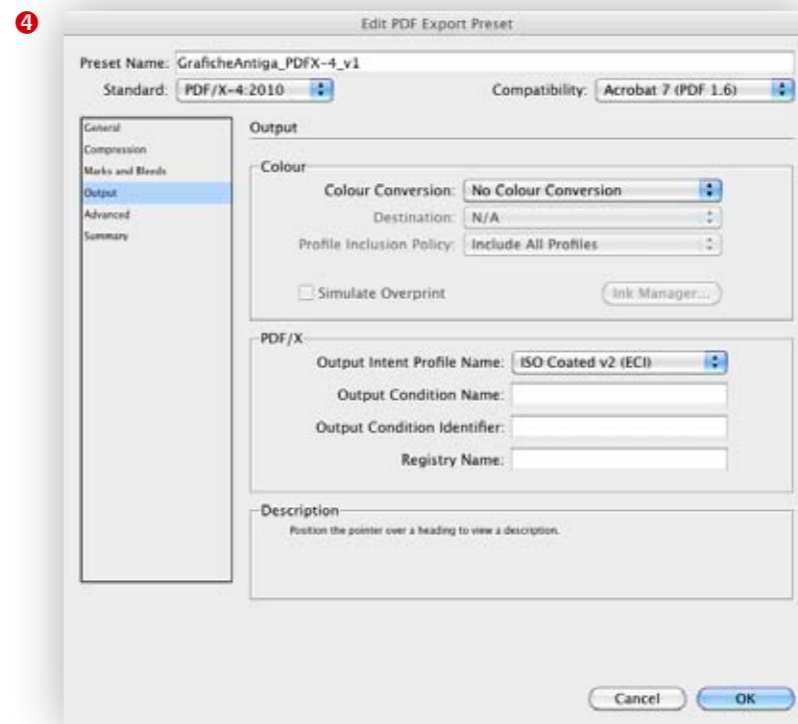
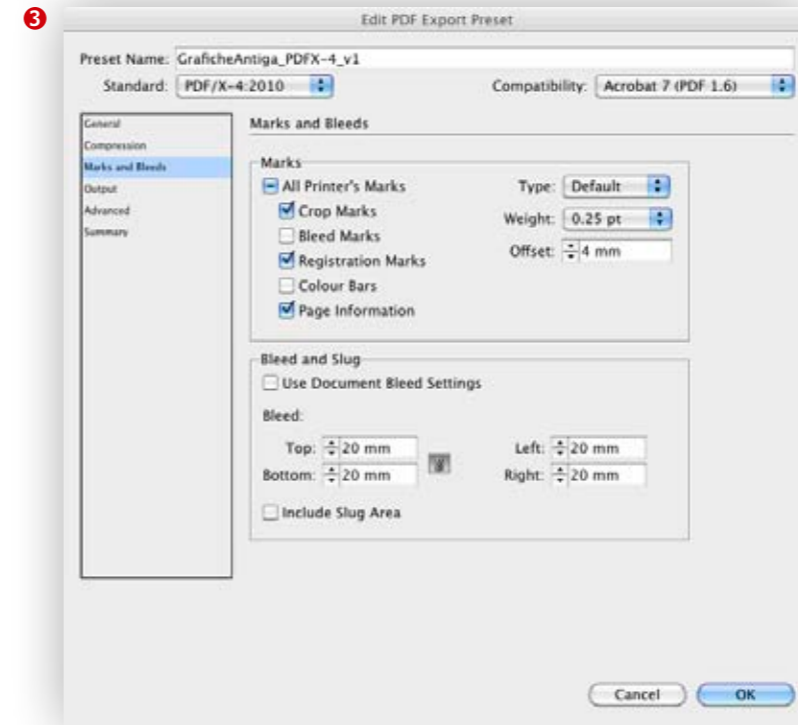
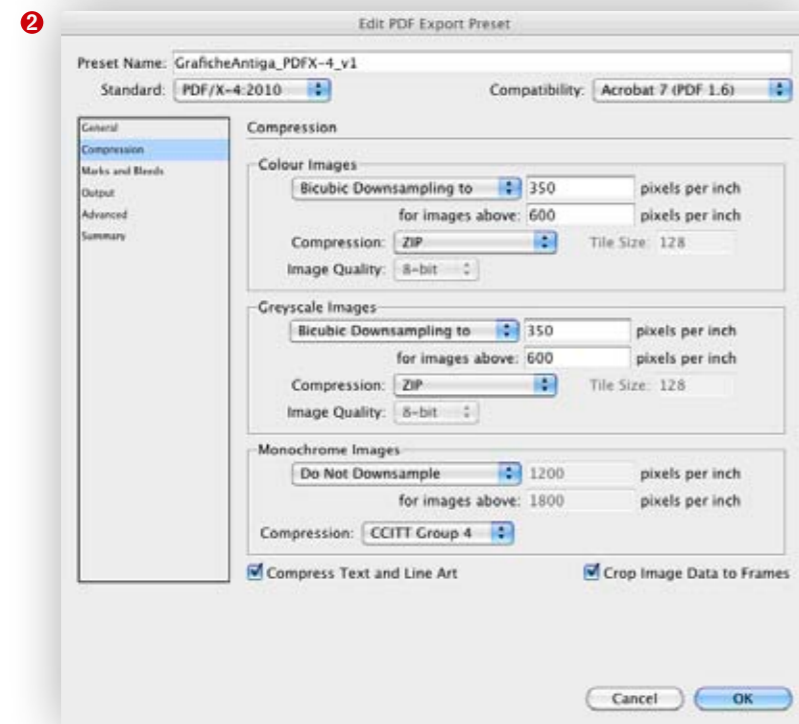
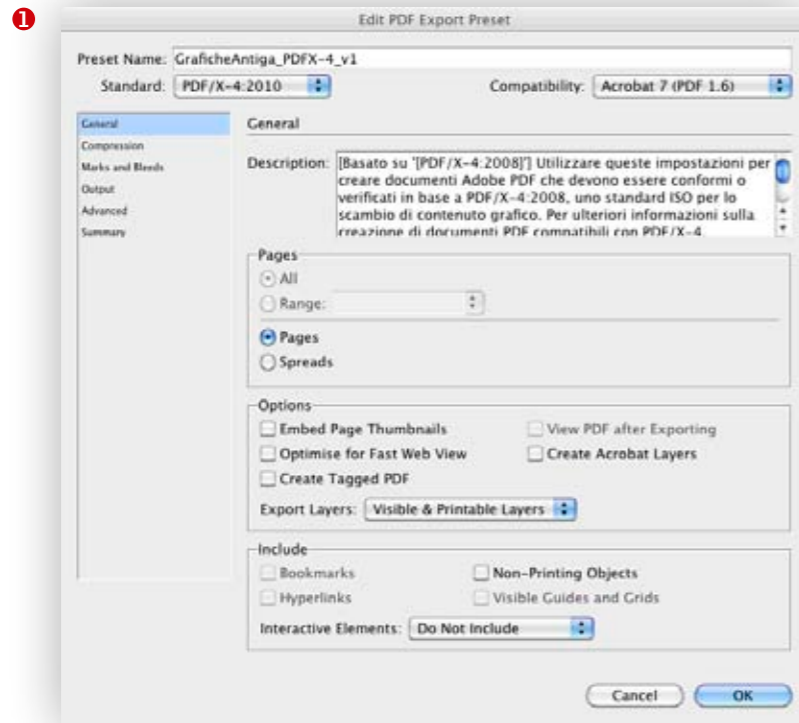
2. As soon as you have loaded it, select the predefined from the menu File- Predefined Adobe PDF- GraficheAntiga_PDFX-4_vl

As soon as you have downloaded the predefined you can load it in InDesign from the menu File – Adobe PDF Presets – Define...

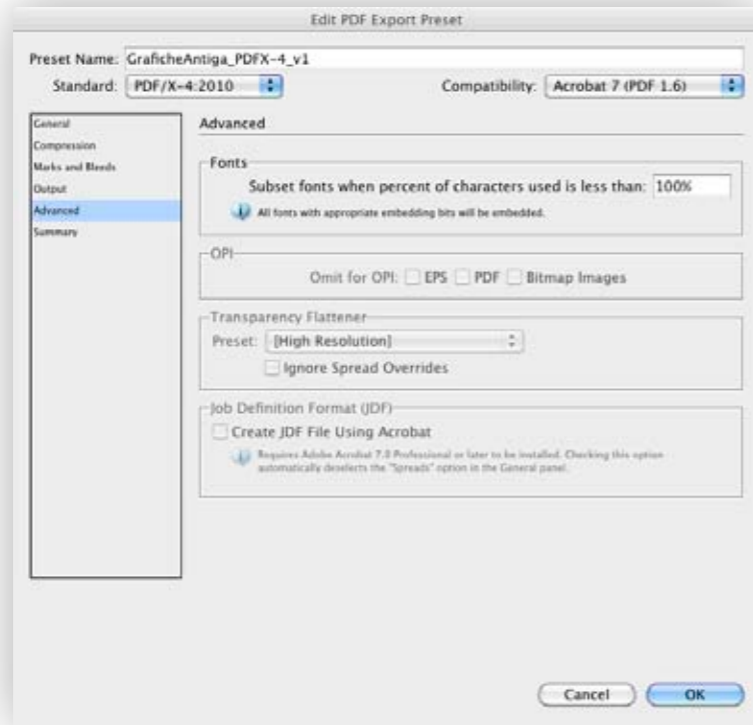


1. Click right on Load and select the predefined GraficheAntiga_PDFX-4_v1.joboptions

In alternative we specify here below the layout of our predefined:



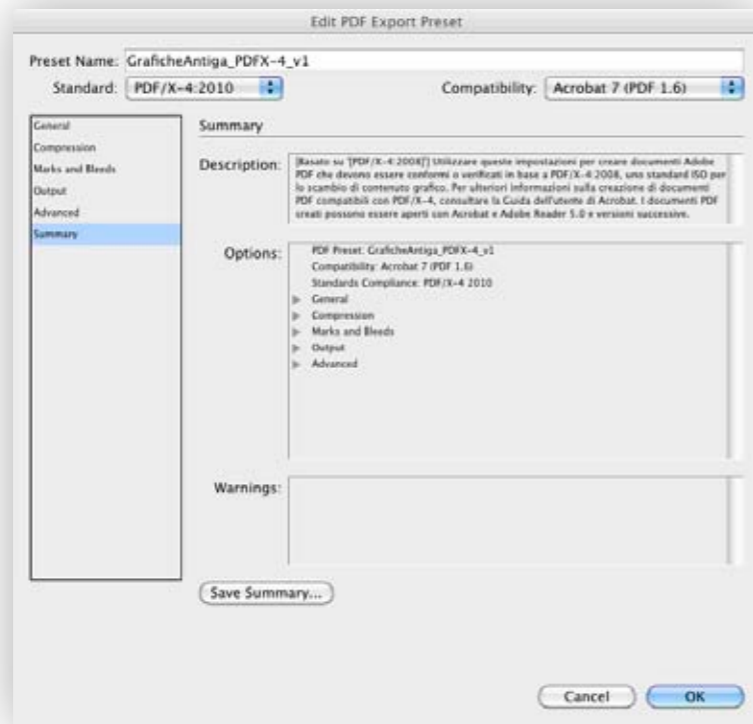
5



At this point we can store our profile as follows: click on Save Predefined (salva predefinito) at the bottom left so as it appears on the blade of Adobe PDF Presets and is available for the next PDF export operations.

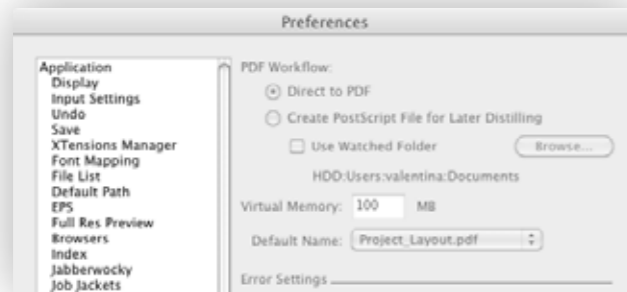
If you click on Export the creation of the PDF /X-4 from InDesign starts.
In case of many pages we suggest to export the PDF in different parts in order to avoid the creation of a file that could be too big, in any case don't go over Mb 800.

6



01.2_CREATION OF A PDF FROM QUARKXPRESS 8

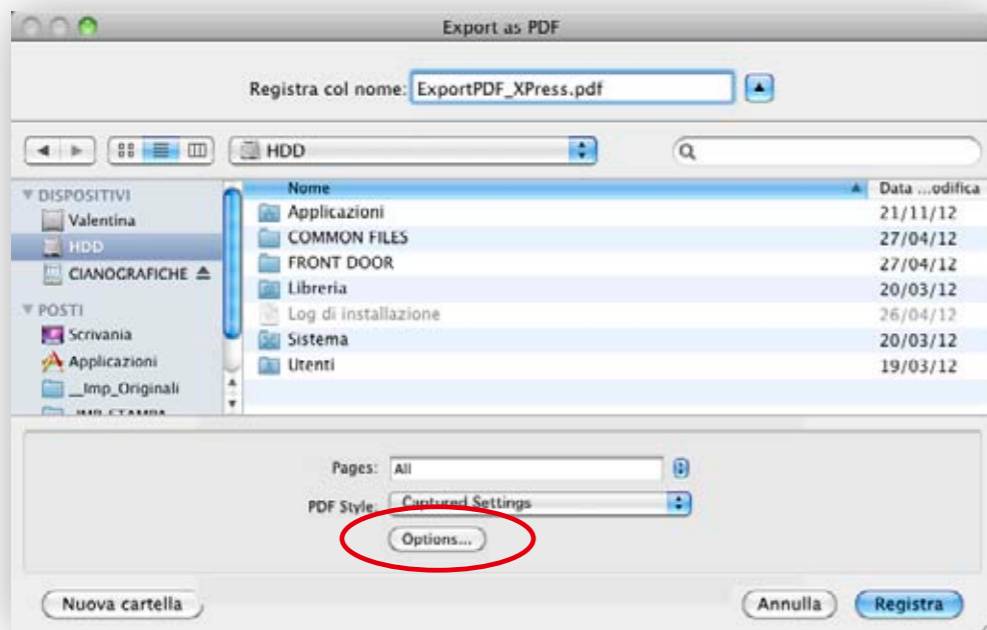
The predefined for QUARK must be created directly from the program.
From the menu Preferences PDF section activate "Direct to PDF".



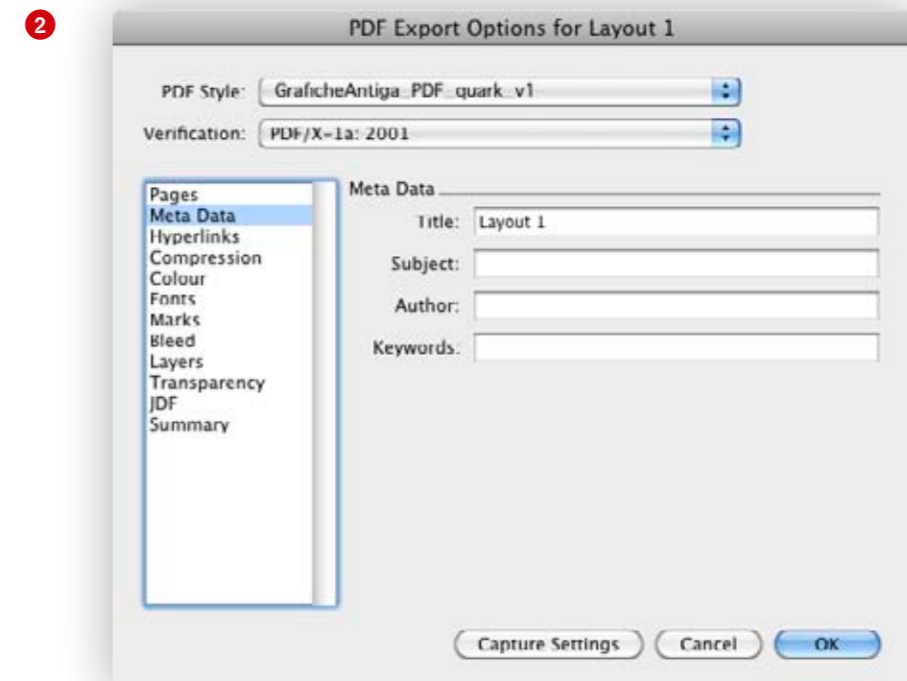
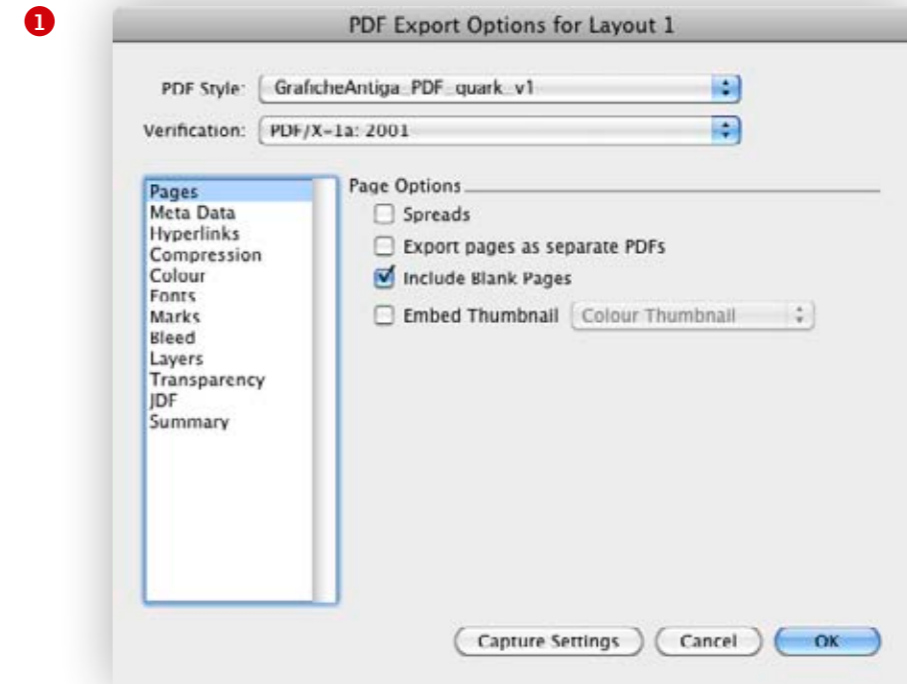
From the menu File – Export – Layout as PDF (Archivio-Esporta-Layout).



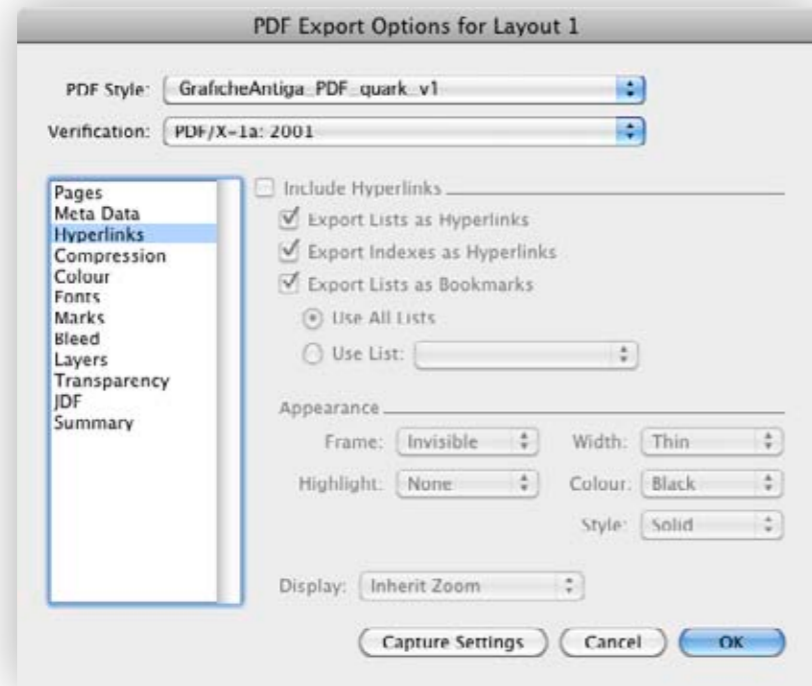
1. Click at the bottom on Options (opzioni)



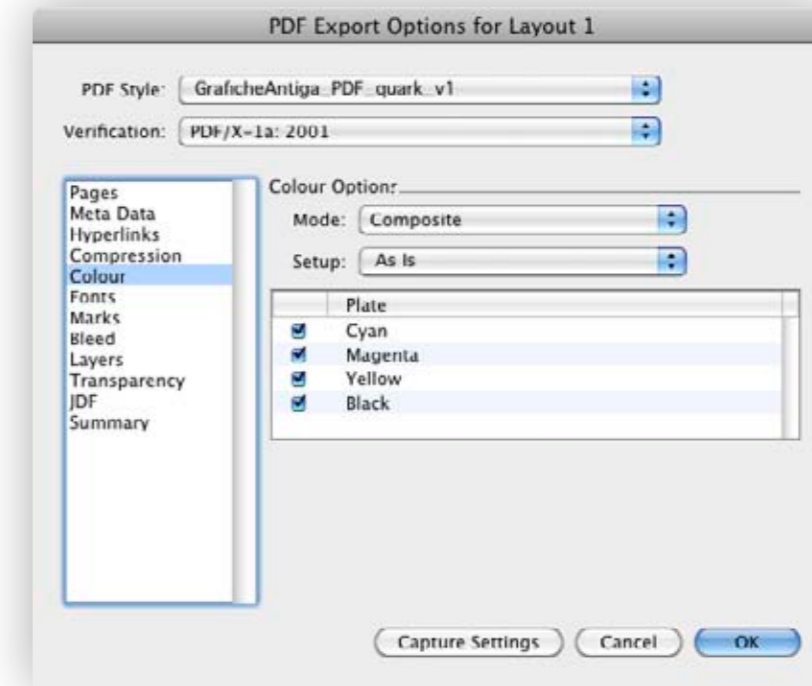
Here below we specify all the layouts of our predefined:



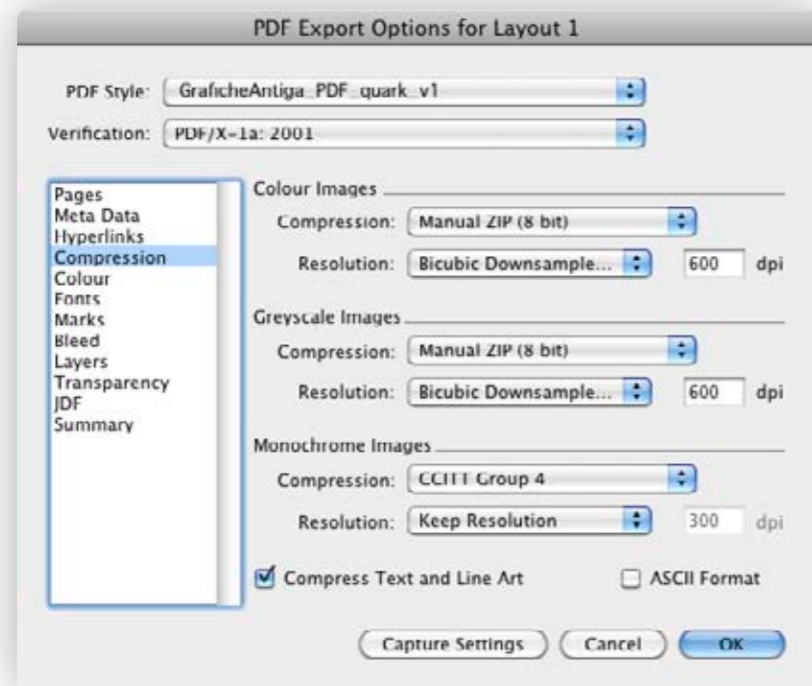
3



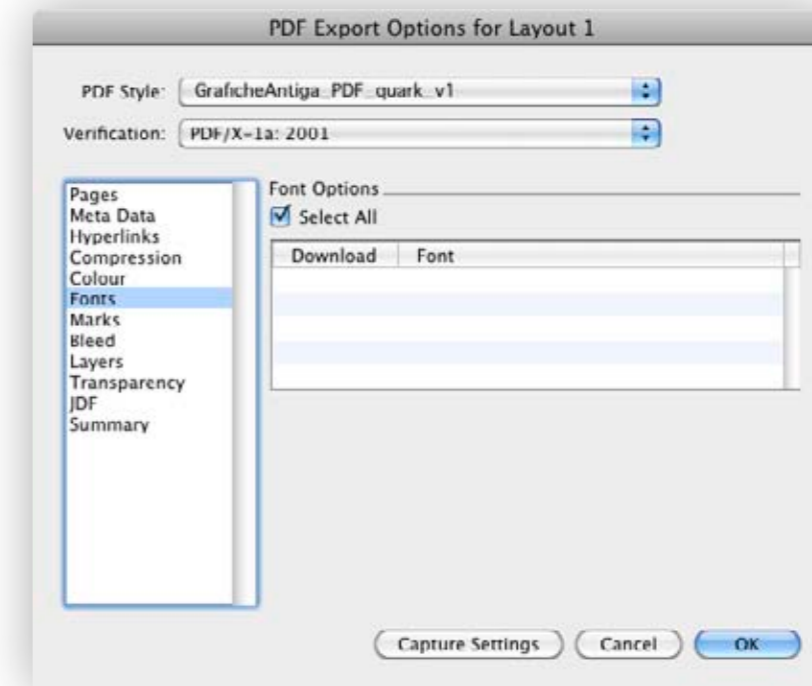
5



4



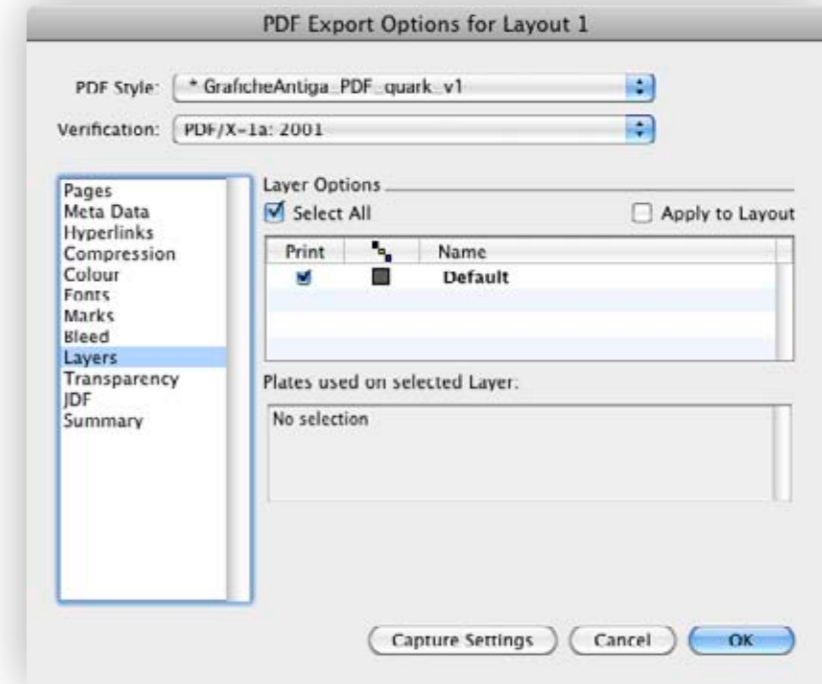
6



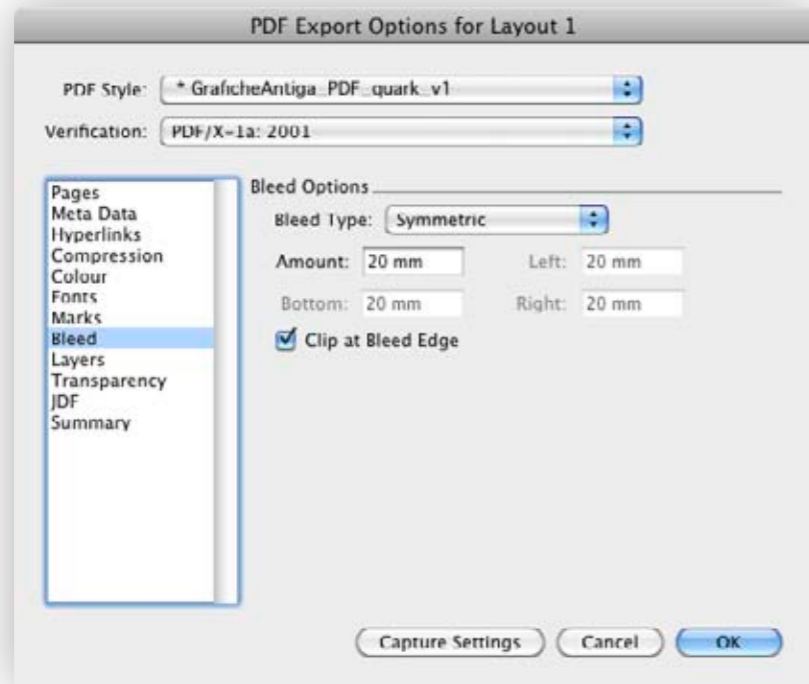
7



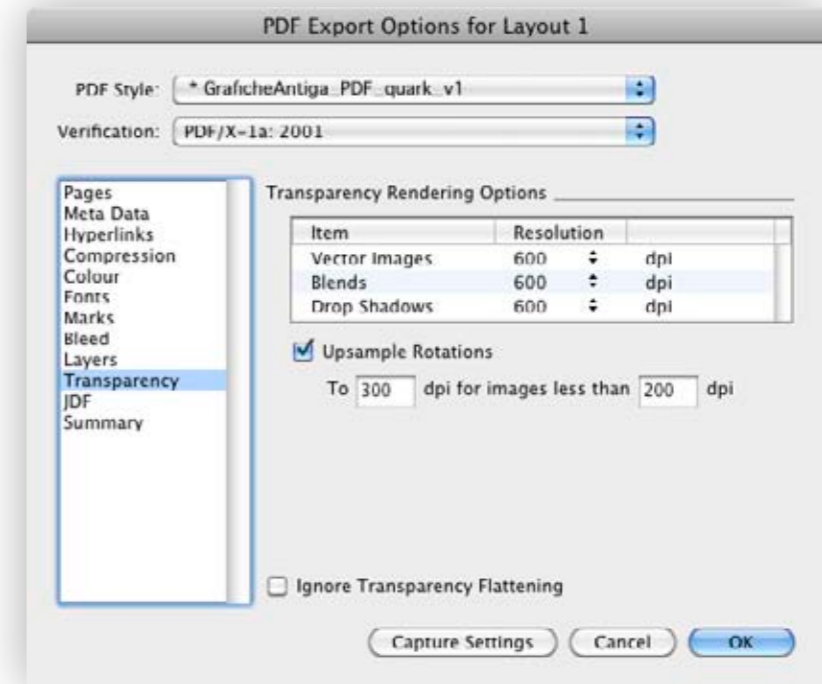
9



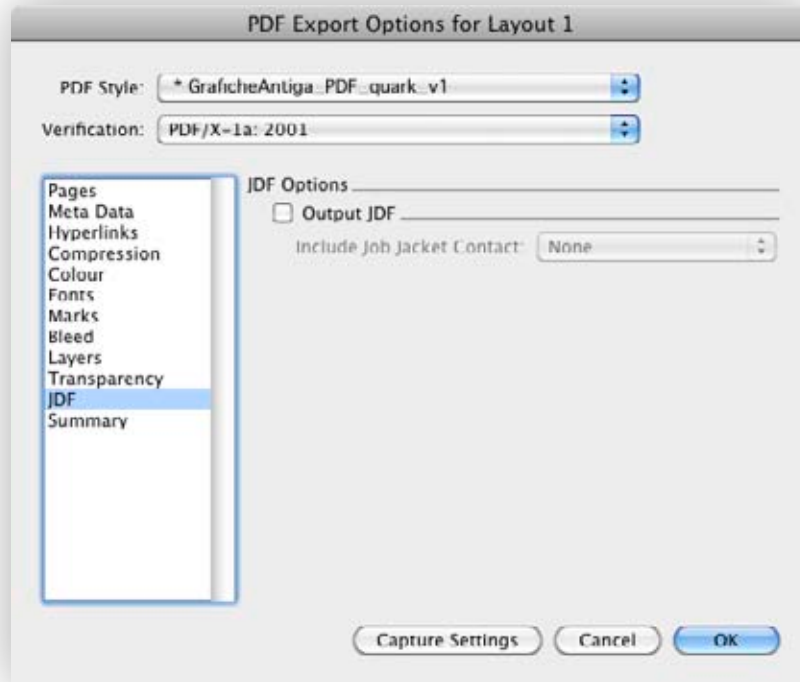
8



10



11



At this point we can store our profile if we click at the bottom left on Capture Settings so that it can appear on the menu of PDF Style, which we are going to use in the future exports of PDF from Quark.

If you click on Export the creation of the PDF from Quark starts.

In case of many pages we suggest to divide the export of the PDF in different parts in order to avoid files which could be too big. In any case don't go over Mb 800.